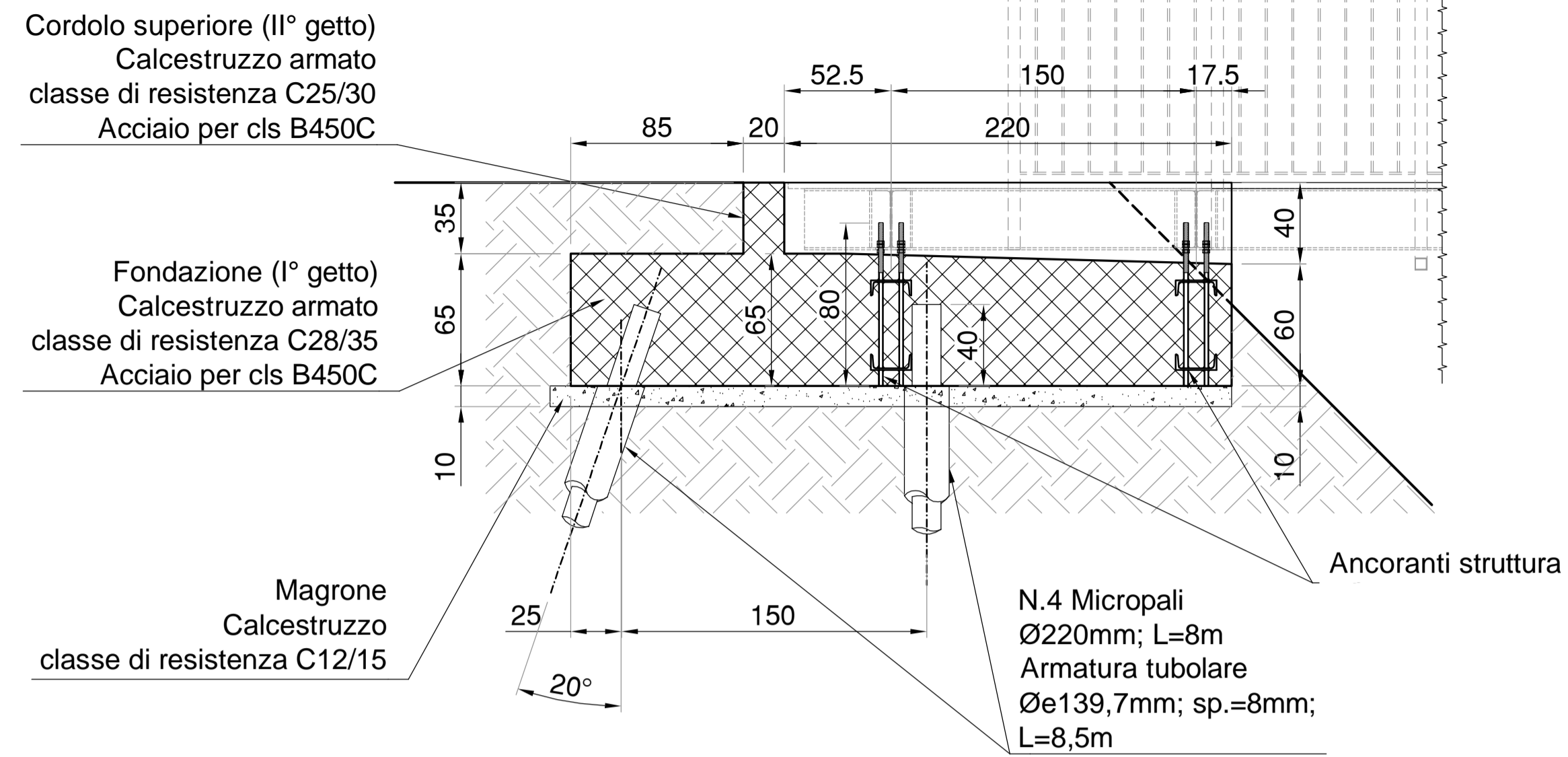
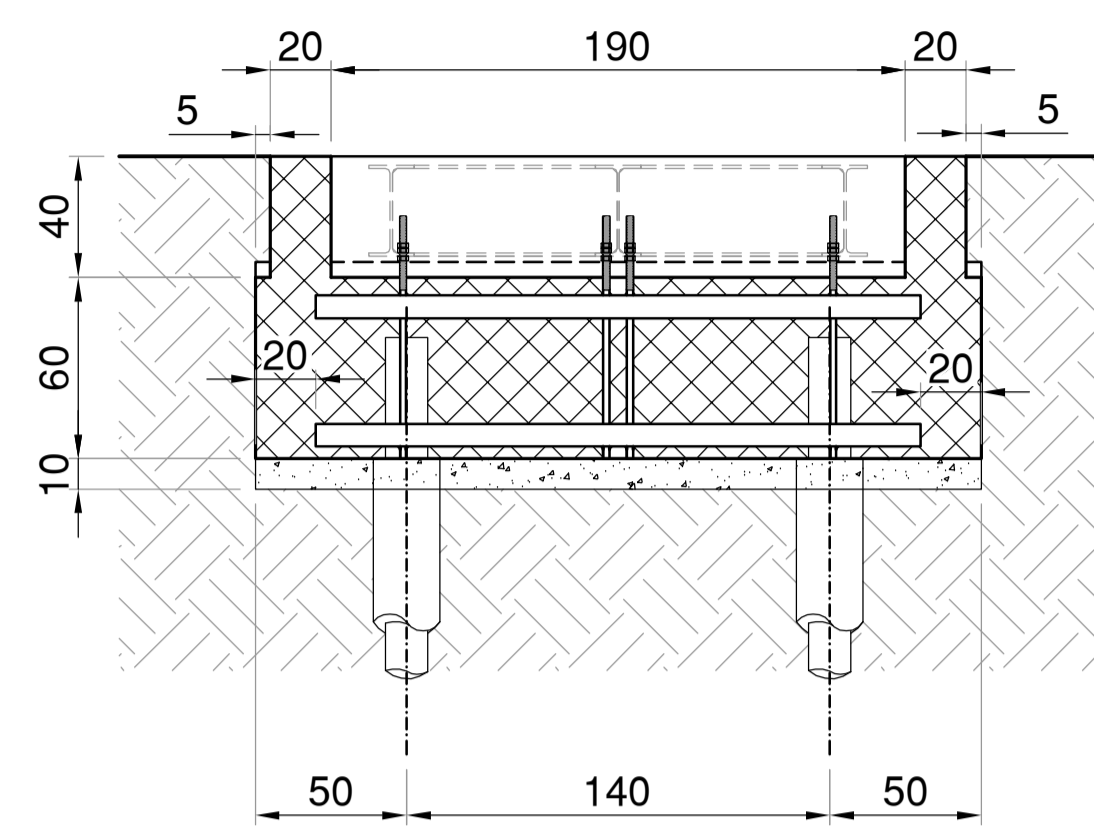


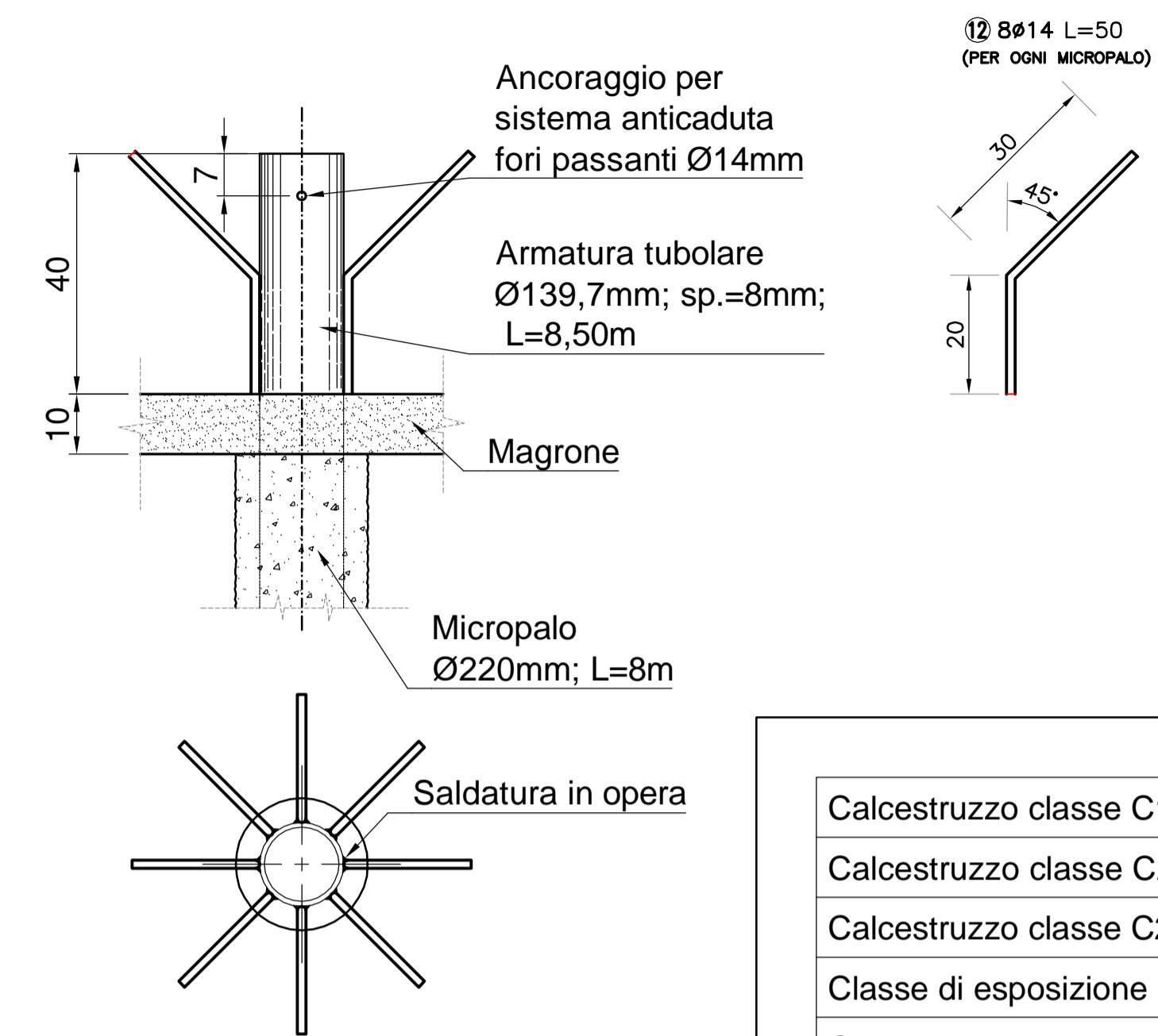
SEZIONE LONGITUDINALE FONDAZIONE
Scala 1:25



SEZIONE TRASVERSALE FONDAZIONE
Scala 1:25

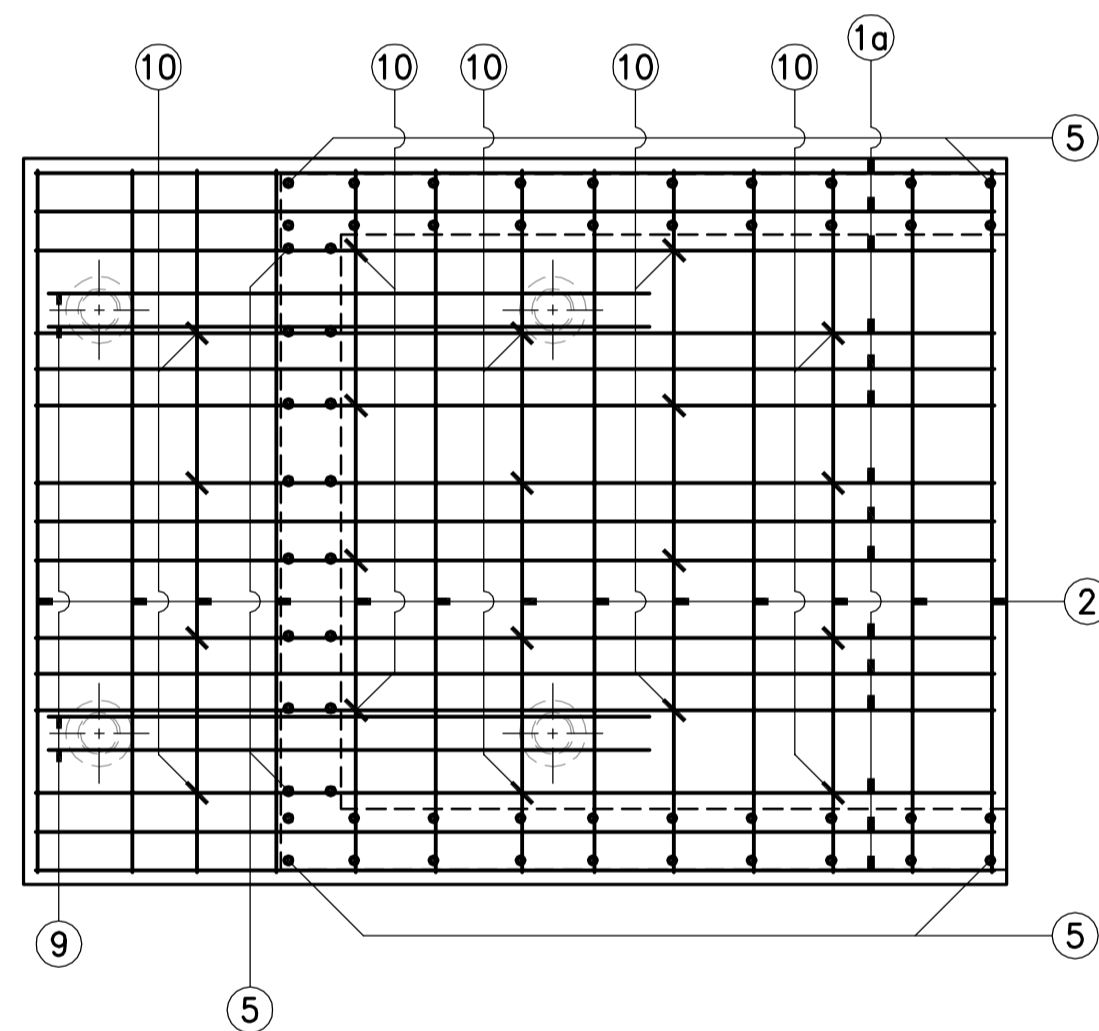


PARTICOLARE MICROPALO
Scala 1:10

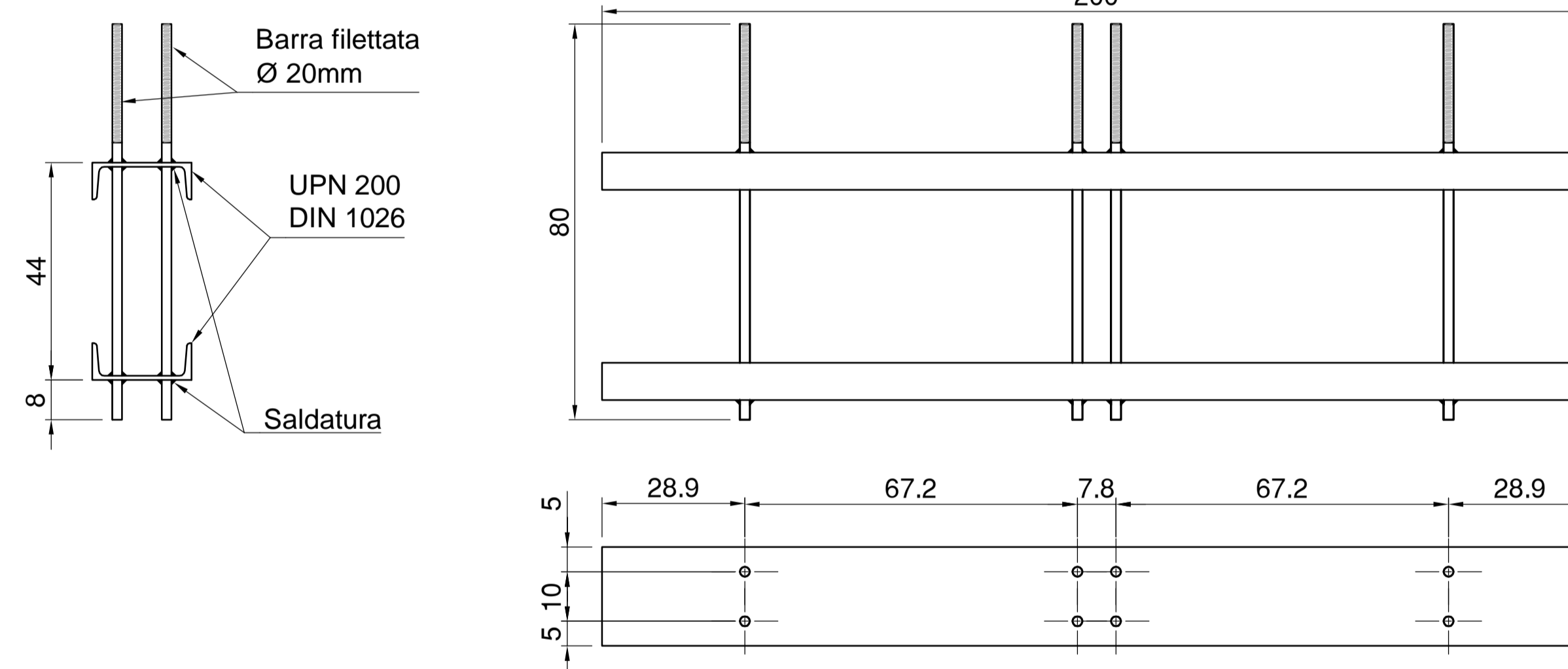


Calcestruzzo classe C12/15; Magrone
Calcestruzzo classe C25/30 (Rck>30MPa); Cordolo superiore
Calcestruzzo classe C28/35 (Rck>35MPa); Fondazione
Classe di esposizione XC2
Classe di consistenza S4
Diametro massimo aggregati Dmax=20mm
Acciaio da armatura B450C
Acciaio da carpenteria S275JR - EN10025, zincato
Bulloni e barre filettate ad alta resistenza Classe 8.8
Saldature continue a cordone d'angolo (Classe di esecuzione EXC2)

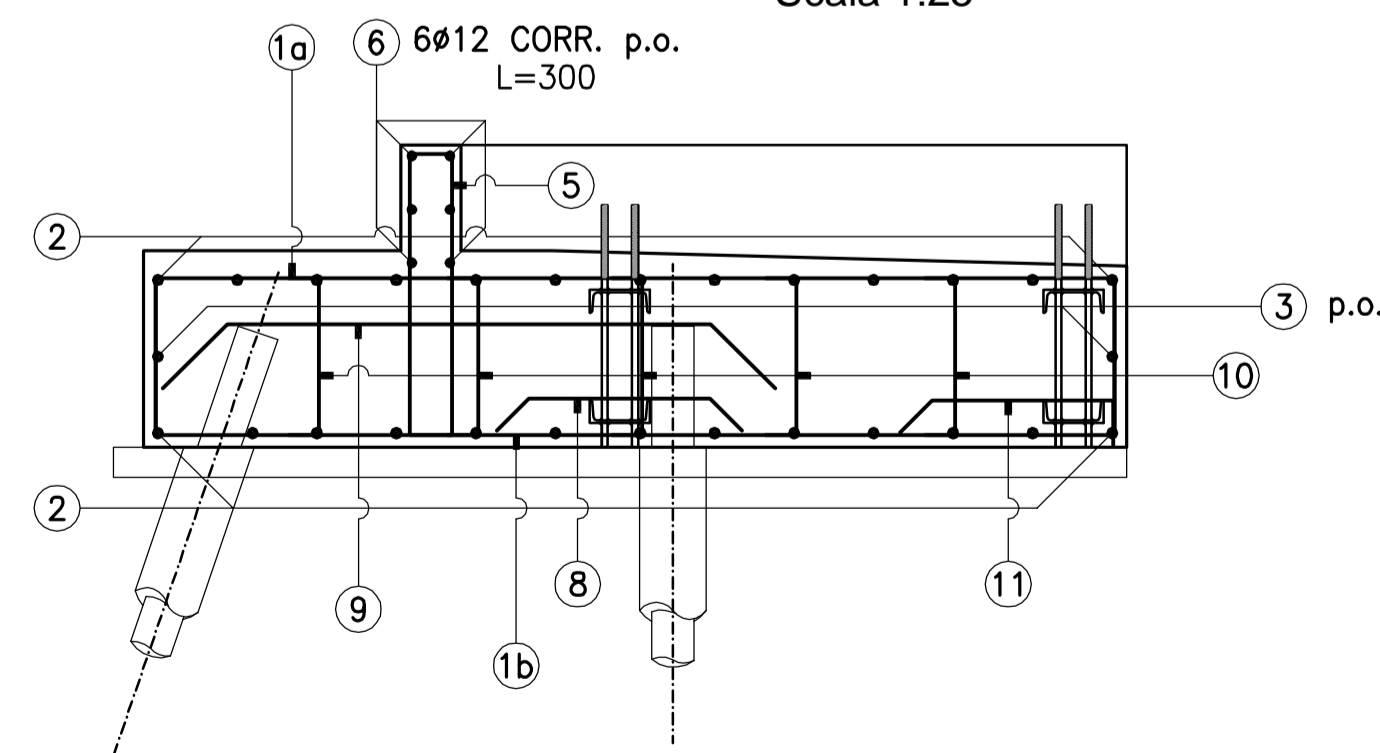
PIANTA ARMATURA
Scala 1:25



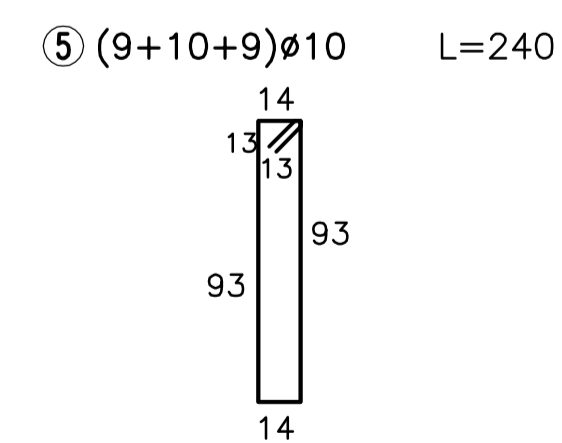
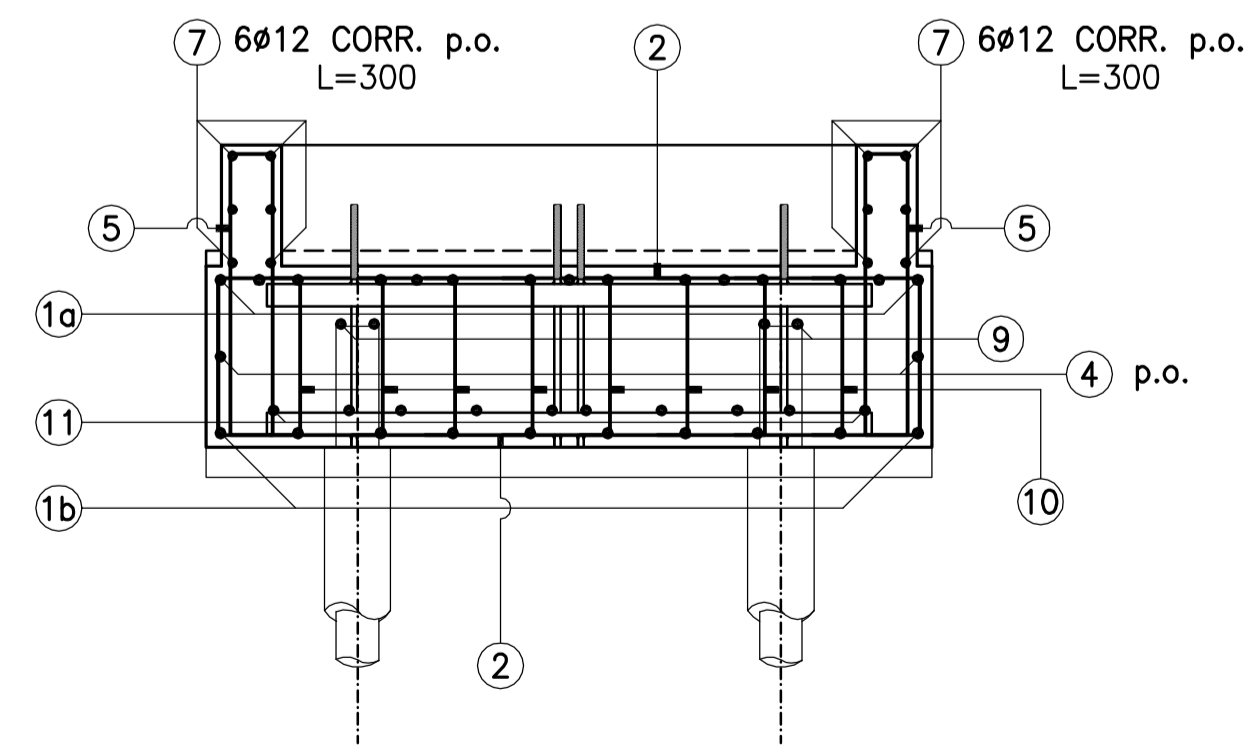
ANCORANTE STRUTTURA (posizionare con dima)
Scala 1:10



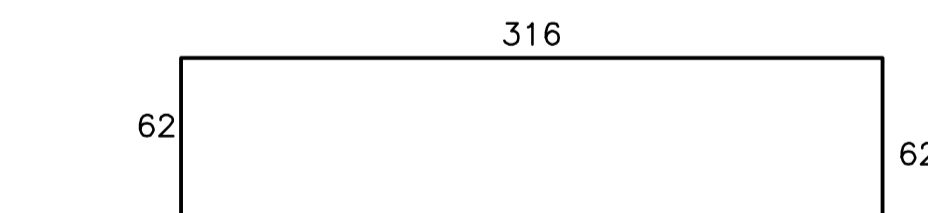
SEZIONE ARMATURA
Scala 1:25



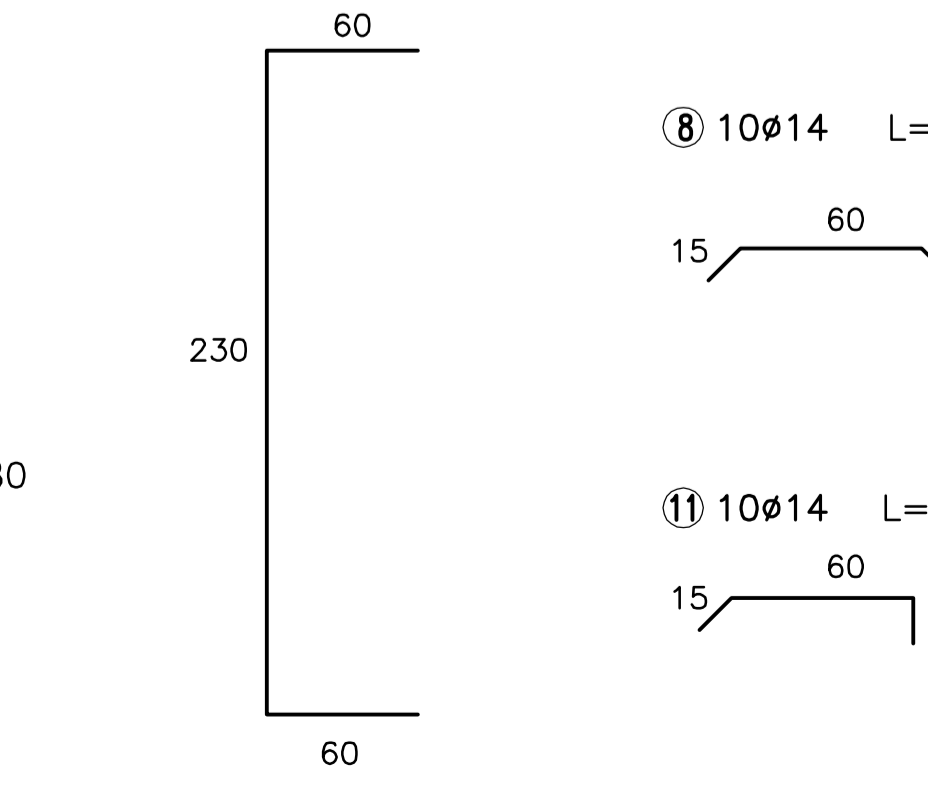
SEZIONE ARMATURA
Scala 1:25



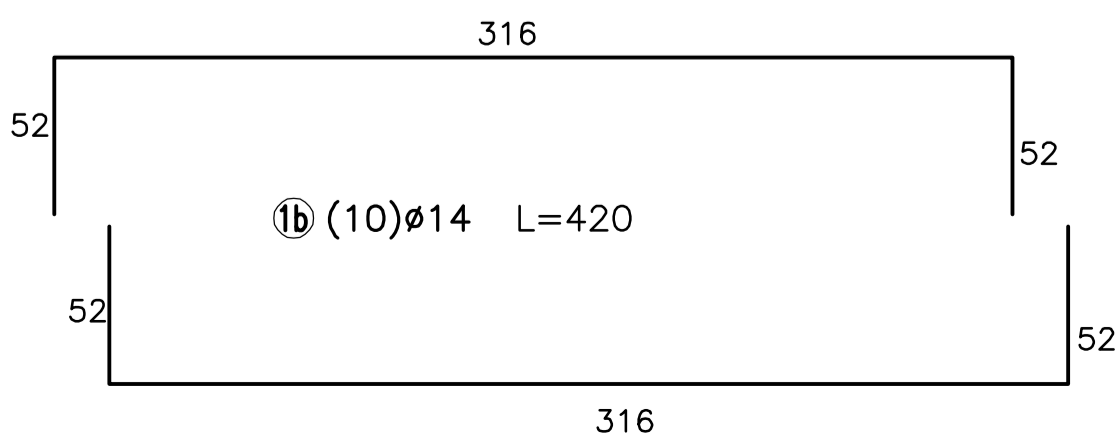
4 (1+1)Ø14 piego orizzontale L=440



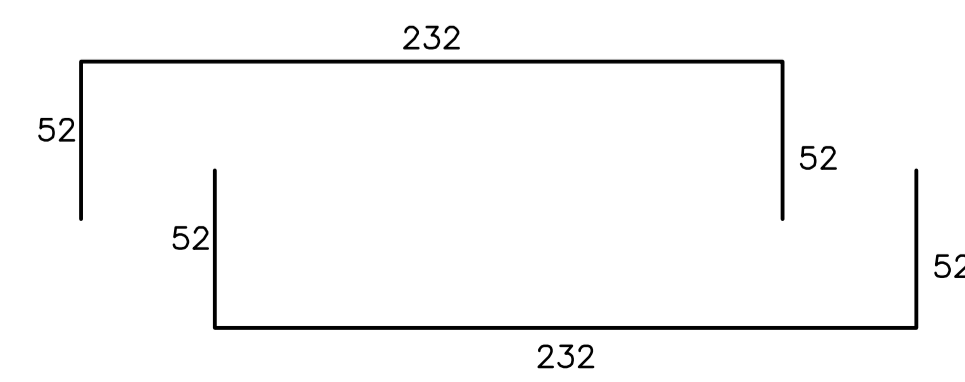
3 (1+1)Ø14 piego orizzontale L=250



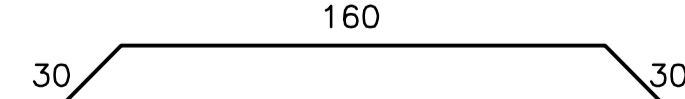
10a (15)Ø14 L=420



2 (13+13)Ø14 L=336



9 (2+2)Ø14 L=220



"LAVORI DI REALIZZAZIONE BELVEDERE
in FRAZIONE CANTAVENNA"

PROGETTO ESECUTIVO

IL PROGETTISTA STUDIO TECNICO DOTT. ING. GIORGIO MONTIGLIO VIA MAGNOCAVALLO, 22 - CASALE MONF. TO 15033 TEL. 0142.76890 - FAX 0142.460142 C.F. MNTGR55D10885D - P. IVA 01141110062 ORD. ING. AL N° A.762		IL RESPONSABILE UNICO DEL PROCEDIMENTO		
Pratica:	17/10	Titolo:	FONDAZIONE E MICROPALI SEZIONI E DETTAGLI CONSTRUTTIVI	
Data:	07.12.2017	Tavola:		4
Scala:	1:25 1:10			